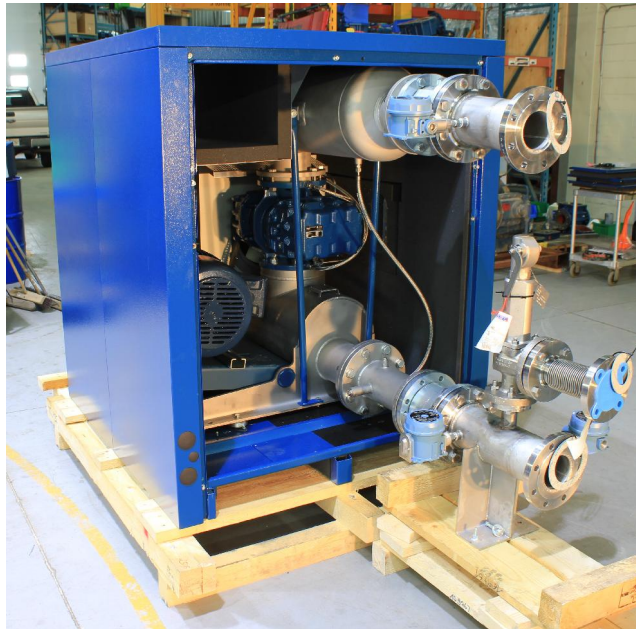


Biogas Blower for Steel Mill



Case Study Details

Gerdau owns and operates a steel mill in Cambridge, Ontario. They were updating their landfill gas utilization system and needed a new, larger biogas blower.

H2Flow supplied a special Aerzen biogas blower package complete with GM 25S blower, 30 HP motor, noise enclosure and all accessories. Due to the gas being corrosive the blower internal casing and impellers were lined with PTFE.

The blower is sized for 200 scfm at 8 psig and runs on a VFD. Equipment is rated for an explosion proof area and is gas tight.

Client: Gerdau

Start-Up: May 2017